

# Western Chapter News

I • E • C • A

Serving Erosion Control Professionals  
In  
Arizona, California, Nevada and Hawaii

## Inside this issue:

Article:  
*Think Blue*

*President's Message*

*Calendar of Events*

*Contractor's Corner*

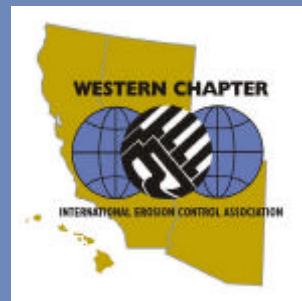
*CPESC News*

*Western Chapter  
Board Election*

*Technical Corner*

*Regulatory Update*

*Classifieds*



## Think Blue

San Diego administers a comprehensive public education program to inform residents, businesses, and tourists of the correlation between storm drain pollution and local water quality. **Think Blue** seeks to focus public attention on protection and prevention of pollution in our local creeks, lakes, bays, wetlands, and ultimately the ocean. The **Think Blue** campaign highlights a color "Blue" and a theme "**THINK BLUE - ACT BLUE**" with which the public can easily identify. The goal is to have everyone associate the color "Blue" with water quality, much in the same way that they have associated the color green with environmental efforts.

Current participants in the **Think Blue** campaign are the City of San Diego, County of San Diego, Port of San Diego, and Caltrans. These governmental agencies contribute various resources, mailing lists, funding, assistance with events, and other value-added services to the program. The City plans to take the lead in acquiring additional stakeholders in the **Think Blue** campaign, with the goal of 100% participation of all 20 municipal committees in the region. The City of San Diego intends for **Think Blue** to be the primary regional, storm water education resource.



Agencies outside of San Diego County are now requesting permission for use of the **Think Blue** banner for their public education programs. The City of San Diego freely shares the **Think Blue** logo and message with all those who are interested.

The **Think Blue** campaign is charged with broadening awareness and educating the public about the storm drain issue by utilizing strategic messages that outline individual responsibility for the sources of this pollution. To accomplish this goal, the campaign is utilizing a broad array of tools including media advertising, **Think Blue**

brochures and educational materials, a toll-free telephone hotline, outreach events and community education. To reinforce the individual responsibility, **Think Blue** has adopted the slogan, "**YOU ARE THE SOLUTION TO STORM DRAIN POLLUTION.**"

It is the goal of **Think Blue** to inform people and influence attitudes about how their normal, everyday activities affect storm water pollution. The educational approach is to use a variety of media, community outreach, and educational opportunities to provide residents, businesses, and tourists with suggestions on how to prevent storm drain pollution. **Think Blue** tells everyone

(Continued on page 3)

## PRESIDENT'S MESSAGE

Dear Western Chapter Members,

The 32<sup>nd</sup> Annual IECA Conference and Exposition took place in Las Vegas this past February. The conference itself was a great success, as were the three new Western chapter sponsored training courses. The Soil Characteristics and Improvement for Sustainable Erosion Control Vegetation class had over 80 attendees, several of whom expressed interest in a more in-depth presentation of soil biology. The two Contractor related classes, 'Growth Strategies and Strategic Planning Processes for Contractors', and 'Estimating and Bidding Strategies for Bottom Line Success', were also well attended. The Estimating/Bidding class got rave reviews and should be offered again.

Continuing our primary mission of education, the Western chapter is sponsoring 'A Taste of Napa Valley' on Friday July 20th, 2001. We will tour various erosion and sediment control practices at some of Napa Valley's finest vineyards. The day will begin at 9:00 at Domaine Chandon, with a continental breakfast followed by a tour of the vineyard. The tour will continue on to Spring Mtn. Vineyards, including a catered lunch, followed by a tour of Frog's Leap Vineyard, and finally back to Domaine Chandon for a barbecue. We expect to rent several large vans to facilitate the tour. Look for email over the next few weeks with registration details. This is a great opportunity to learn and socialize with fellow Western chapter members. Don't miss it!

Other educational updates: We are currently planning another field tour, this time in the Phoenix area with Chapter member Lou Snow as our guide. We are looking at dates in mid- to late- fall, 2001. The regional conference will most likely be held in mid- to late-April of 2002 on Catalina Island. We envision a venue similar to the San Diego conference held in 1998, with a day of professional presentations followed by a day in the field examining and evaluating local erosion control problems, such as shore zone stabilization and grazing. This is a wonderful place for a conference, plan on extending your stay and bring the family.

Please take a few moments to look at our new web site, [www.wcieca.org](http://www.wcieca.org). We have added several links, including our bylaws, and financial statement. Also please note that we will be holding our annual Board of Directors election on June 16. We will be voting on three positions. It is always great to get new blood on the Board, people who are enthusiastic and committed, folks with new ideas. So please consider running, or nominate someone who would be a great addition. The next Board meeting will follow the elections and coincide with the July field tour. As always, all Chapter members are welcome.

Our social get-togethers need to be resurrected, since members are sometimes unable to travel to field tours or conferences. Us Reno/Tahoe folks hope to hold the next one in Tahoe, when the weather warms up.

See you in Napa (or Tahoe)!

**Julie Etra, CPESC**  
Western Chapter President

## CALENDAR OF EVENTS

### April 20th

Conservaseed Annual Open House: April 20, Rio Vista, CA. R.S.V.P required, contact Connie at (916) 775-1676.

### April 28th thru July 22nd

California Native Grass Association Tours: April 28, Jepson Preserve; May 12, Hedgerow Farms; July 14 Mountain Meadow Tour; July 21-22, Fall River Valley and Big Valley. Contact Mary Kate McKenna (530) 759-8458. Web site [www.cnga.org](http://www.cnga.org).

### May 1st

WCIECA Bay Area Chapter Social: May 1, starting at 6:30 at the Firehouse Grille, which is located a short distance to the north of Hwy 580 in Dublin, CA at 7294 San Ramon Road, (phone (925) 560-1115, or [www.firehousegrille.com](http://www.firehousegrille.com)). Please RSVP to Sandy Mathews at 925-423-6679 or [mathews6@lnl.gov](mailto:mathews6@lnl.gov).

### May 30th

International Erosion Control Association, in partnership with the EPA, is proud to offer the course "How to Select, Install and Inspect Construction Site Erosion and Sediment Control Best Management Practices for NPDES Storm Water Permit Compliance." Join us May 30, 2001, in San Diego, CA, for this day-long course that will give you the tools to prepare for the enforcement of these regulations. Call toll-free at 800 455 4322 to register by phone, or to obtain additional information contact Beth Ziesenis at [beth@ieca.org](mailto:beth@ieca.org)

### May 31st

Clean Water Act Impacts on New Development Workshop: May 31, Doubletree Hotel 222 Vineyard Avenue, Ontario. Sponsored by the Water Resources Committee of the Southern Chapter American Public Works Association. Contact Carmen Rios for registration information, (626) 458-3525, [crios@dpw.co.la.ca.us](mailto:crios@dpw.co.la.ca.us)

### August 16th-17th

High Altitude Revegetation Summer Field Tour: August 16 and 17, along the Front Range of Colorado. For details contact Gary Thor at [garythor@amar.colostate.edu](mailto:garythor@amar.colostate.edu).



JWA CONSULTING ENGINEERS, INC.

**R. Mark Hoefer, P.E., C.P.E.S.C.**

Vice President

775 588-7178  
Fax 775 588-1726  
email: [jwaeast@aol.com](mailto:jwaeast@aol.com)  
Post Office Box 1819  
Zephyr Cove, NV 89448

925 939-5000  
Fax 925 939-5878  
email: [jwawest@aol.com](mailto:jwawest@aol.com)  
3480 Buskirk Ave., Suite 300  
Pleasant Hill, CA 94523

(Continued from page 1)

that the storm drain system is not connected to the sewage treatment plant, and that simple modifications to their daily activities may affect storm water pollution.

The public can obtain information from widely distributed brochures, which may be obtained over the Internet from the **Think Blue** web site, [www.thinkblue.org](http://www.thinkblue.org), or by calling the hotline, **1-888-THINK BLUE**. Information and brochures on the program are available in English and Spanish. The brochures and web site provide tips on how to prevent storm water pollution. These helpful tips include the proper disposal of pet waste, trash, and lawn/garden clippings, as well as information on disposal of household hazardous materials and recycling used motor oil. Information on storm drain stenciling kits and markers, volunteer opportunities, car pooling, and reporting and preventing spills, may also be obtained through the web site or hotline.

The program hotline number may be used by the public to report incidents of illegal dumping into storm drains throughout the county. The operator is bilingual for the convenience of the Spanish-

speaking communities in the region, and complaints are investigated by code enforcement staff.

So, why **Think Blue**? **Think Blue** is an environmentally friendly way to live. There are many reasons to **Think Blue**, but the most important is to enlist everyone's help to protect the health of our local waters, which are enjoyed by humans and animals alike.



## EROSION STATISTICS

The average daily cost to operate a river dredge is \$29,000.

- from *Landscape Architect* magazine

# STRAW WATTLES™

Tubes of straw used for

**EROSION CONTROL ❖ STORM WATER RUNOFF CONTROL ❖ SEDIMENT CONTROL**

*An economical and efficient*

*Best Management Practice (BMP) for:*

- **Revegetation/Restoration Projects**
- **Construction Runoff Pollution Control**
- **Forest Fire Burn Area Rehabilitation**
- **Forest Harvest Erosion Control**
- **Slope/Streambank Revegetation**
- **Mine and Land Reclamation**
- **Vineyard Erosion Control**

*Use Straw Wattles to:*

- **Promote revegetation**
- **Prevent sheet erosion**
- **Shorten slope length**
- **Filter overland runoff**
- **Capture sediment**
- **Slow/spread waterflow**
- **Reduce rills & gullies**

## California Straw Works

**FAX/Phone:** (916) 453-1456

**Email:** [strawwattles@worldnet.att.net](mailto:strawwattles@worldnet.att.net)

**Web Site:** [www.strawwattles.com](http://www.strawwattles.com)

## CONTRACTOR'S CORNER

Now that spring is here many of us are either back to work or still working on maintenance to our vehicles and equipment. Jobs are being let to bid. Many hours are involved in the tasks we have to take care of at the beginning of the year; financial reports, banking and bonding needs to be completed, taxes and hours with our CPA's.

With any luck everyone had the time and financial means to take a well-earned vacation!

This time of year we reflect again on the previous year and hope and pray we don't make the same mistakes again in the New Year ahead. What have we decided to do differently?

I personally try to reflect on the courses taken at the Vegas conference on estimating and bidding.

Tasks I wish to accomplish and incorporate into my bids, such as how to accurately estimate the cost of equipment, how to compensate for the variables that exist from job to job, and to make sure we always make good sound business/financial decisions when deciding which projects to bid.

A more difficult task Charles Vander Kooi taught us is to set up an overhead budget for a year in advance of the current year. Then to set up overhead recovery percentages to recover these costs based on how much work we expect to contract and complete with our work force and the budgeted overhead.

With this course and some of the others offered this time of year may we all learn better ways to remain profitable in today's competitive market. Not to make financial decisions based on emotions or on short-term situations.

And on a personal note, my focus at the beginning on the New Year was to try and regain having a passion for what I do for a living. Try each day to make sure that situations not to be so stressful and to try and have fun in what I do. And to remember what we have to be thankful for and with the coming of spring to have a new sense of what is important.

Hope to see you in Napa in July at our always well-attended field trips!

Claudia J. Zachreson, CPESC  
Kelley Erosion Control, Inc.  
2395-B Tampa St.  
Reno, NV 89512

## CPESC NEWS

### CPESC Wanna Be?

The Western Chapter is considering holding a CPESC review session and/or proctored CPESC exam for our members locally. We are exploring a couple of options and would like your feedback.

- √ Offering the review course and exam at the 2002 Western Chapter Regional Conference;
- √ Coordinating proctored exams throughout the chapter areas; or
- √ Coordinating a chapter-wide event that would provide the review course and exam.

If you are planning to take the CPESC test in the near future and would like to have a local testing option, please get in touch with Sandy Mathews at [mathews6@lnl.gov](mailto:mathews6@lnl.gov) and express your preference.

A CPESC is a recognized specialist in soil erosion and sediment control. The certification program, sponsored by the Soil and Water Conservation Society and the International Erosion Control Association, in cooperation with the American Society of Agronomy, provides the public with evidence of professional qualifications.

You can get more information on the CPESC certification and download that application from <http://www.ieca.org>.

### Are You A Member?

To become a member of the IECA, or to become a Western Chapter member (if you are already an IECA member) contact IECA Headquarters:

(800) 455-4322  
<http://www.ieca.org>



**KELLEY EROSION CONTROL, INC.**

2395-B Tampa Street, Reno, NV 89512

775/322-7755 • Fax 775/322-6606

[kellejerosion@worldnet.att.net](mailto:kellejerosion@worldnet.att.net)

Contractor License Numbers: NV 00274238 NV 0039951 CA 703012

*Hydroseeding • Straw Blowing • Revegetation*

*Mining Reclamation • Wetlands • Dust Abatement • Landscaping*





## WESTERN CHAPTER IECA BOARD ELECTION IT'S TIME TO GET INVOLVED

It is time for our Western Chapter Board of Directors election. Three positions are up for election. Each of these three positions will serve a three-year term. Once the new Board is elected, it will elect the officers.

Board meetings are held four times a year in different parts of the Western Chapter region based on where the Board members are located. Board members cover their own expenses associated with attending the Board meetings. If you would like more information on serving on the Board contact one of the current Board members. You can also review the Chapter Bylaws on the web at <http://www.wcieca.org>.

If you have been a Western Chapter member for at least one year and are interested in running for a Board position, please send a brief description of yourself and explain why you want to serve on the Western Chapter Board of Directors to the Administrative Vice President, Carol Forrest at:

URS  
1615 Murray Canyon Road  
Suite 1000  
San Diego, CA 92108  
or  
[Carol\\_Forrest@urscorp.com](mailto:Carol_Forrest@urscorp.com)

Please limit your description to about 200 words. We need to receive the candidacy notices by May 15th.

After we receive your notices, we will assemble the names and descriptions on a ballot that will be sent out to all Western Chapter IECA members for a vote.


We need everyone's support and participation to make this a viable organization, so please consider running for a Board position. There are many ways you can give back to the industry, but none as valuable as helping join erosion control professionals in a pursuit of shared knowledge and experience. And besides, it is fun too.

**NEW!** **Bioengineering Solutions**

Trouble with Environmental Compliance?  
Need designs with Regulatory Acceptance?  
Need a solution that gets stronger with time?

**Bio Draw 1.0**


Compendium of Biotechnical Soil Stabilization Solutions



- 34 Biotechnical Soil Stabilization Techniques
- 33 Typical Drawings in CAD & Word/Wordperfect formats
- Photos of Applications & Case Studies
- Comprehensive Technical Information
- Manufacturer Directory of Erosion Control Products

Bio Draw is the most complete technical guide  
you will ever need for Bioengineered Projects!

From the developers of  
Erosion Draw 3.0!

 **Salix** • Applied Earthcare

1-800-403-0474

Visit our websites for a test drive

[www.biodraw.com](http://www.biodraw.com) [www.erosiondraw.com](http://www.erosiondraw.com)

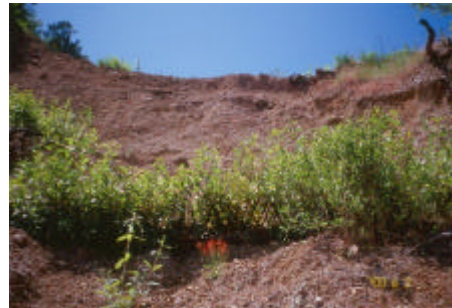
# TECHNICAL CORNER: MODIFIED BRUSH LAYERS FOR LANDSLIDE RECLAMATION

## Modified Brush Layers for Landslide Reclamation

Modified Brush Layers (MBLs) provide immediate surface stabilization for landslides and act as a catalyst for natural revegetation. MBLs are brush layers that are supported on willow wattles, live fascines, short logs, or boards. These biotechnical structures are typically installed in a staggered design which makes them independent of one another. This arrangement provides small vegetated terraces which can intercept “raveling” slopes, preventing soil and rocks from gathering momentum as they move downslope. Revegetation occurs as the brush layer cuttings grow and stabilize the soil with their adventitious roots. The terraces also catch native seeds and provide a stable bed for plant establishment.

In dryer areas, MBLs are preferable to wattles or fascines alone, as the brush layer cuttings are more deeply imbedded into the slope and have a better chance for survival. It is important to harvest plant material during the dormancy period, and cuttings should be properly handled for optimal growth. Alder or dead wood

may be used for the supporting wattles, but it is best to use locally adapted willow species for the brush layers. MBLs are inexpensive to



construct; live materials can often be obtained at no cost, and the only other expenses usually include logs or boards, stakes, rope, and labor time.

Construction of MBLs is relatively simple, and with an efficient work crew a moderately-sized landslide can be stabilized within a few days. As with any type of landslide repair, work can be dangerous, and some slopes may be considered too steep or too unstable for this type of stabilization work. Placement of MBLs varies with slope conditions, and on steeper slopes the structures may be spaced at closer intervals. Locations can be marked by flagging or spray paint.

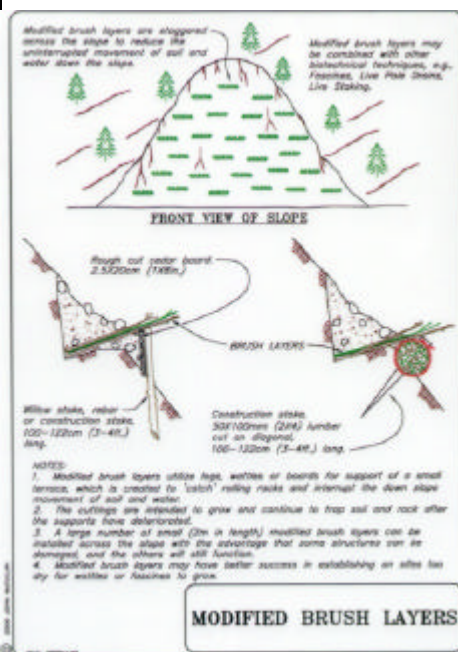
The first step in construction is to excavate a bench, which should be as long as the wattle or other supporting structure. The support should be placed on the outer edge of the bench and securely staked.

The terrace is completed by backfilling behind the support with soil. For optimum growth of brush layer cuttings, the bench should angle slightly downward into the slope. Cuttings should be placed in a criss-cross fashion perpendicularly across the wattle, log, or board, with the basal ends into the slope. The branch tips should point up slightly, with 20% extending past the support and exposed to sunlight. Once the cuttings are in place, soil should be backfilled over the lower 80% of the brush layer cuttings and stomped in between the branches.

This biotechnical erosion control technique has been used successfully to repair and revegetate landslides in British Columbia and the Pacific Northwest. The infamous “Stafford Landslide”, located on lumber company land in Northern California, was stabilized using this technique. The Stafford Slide, which was actually two separate slides that occurred during the same storm event, destroyed several homes (no lives were lost). The MBLs have stabilized the surface of the slide, providing a stable base for seeding with native grasses and allowing native vegetation to establish. This is a good technique to initiate the process of natural healing.



By Rose Sloan/Adapted from Bio Draw 1.0, John McCullah, Salix Applied Earthcare



## REGULATORY UPDATE

### **Regulatory Update: California Set To Modify Construction Storm Water Permit To Require Runoff Monitoring**

The state of California is currently modifying its general permit for discharges of storm water from construction sites to require the collection and analysis of runoff samples. The State Resources Control Board (State Board) is likely to adopt the changes at a public hearing in May 2001, and Dischargers will need to implement the changes within 90 days. The proposed modifications are available on the State Board's web site: <http://www.swrcb.gov>.

The permit, known as Order 99-08-DWQ, is a National Pollutant Discharge Elimination System permit required by the Clean Water Act for construction sites with 5 or more acres of ground disturbance. Shortly after being re-issued in 1999, the permit was challenged in court. The final judgment in the case mandated that the State Board add to the permit sampling and analysis requirements to assess runoff for sediment, silt, or turbidity in certain circumstances, and to assess runoff for other pollutants that can not be visually observed in runoff.

Construction sites that discharge runoff directly into waters that are impaired for sediment, turbidity, or silt will need to monitor runoff for these parameters. Indirect discharges (i.e. through a tributary or a municipal storm drainage system) to impaired waters do not have to conduct this monitoring.

The condition of waters is assessed triennially by the state under the requirements of the Clean Water Act. Based on these assessments, a list of impaired waters is developed. This list, known as the 303d list because of the section of the Clean Water Act that requires it, is available from the State Board or Regional Water Quality Control Boards. When Order 99-08-DWQ was issued a list of waters impaired for sediment, turbidity, or silt was attached.

Construction sites operators that store or use materi-

als in a manner that does not prevent contact with rainwater or runoff will need to develop a monitoring program for those materials that cannot be visually observed in runoff. Materials that are stored under watertight covers, in buildings, or in watertight containers are not subject to the monitoring requirements. Materials that are stored in bulk or are otherwise exposed to rainwater or runoff are subject to the monitoring. Materials that are used in a manner that exposes them to runoff, such as soil amendments (e.g. gypsum used to stabilize access roads), are also subject to the monitoring requirements. Unlike the monitoring for sediment, silt, or turbidity, monitoring for non-visually detectable pollutants applies to all permitted construction sites.

The overall goal of the permit is to minimize pollution of construction site runoff. The new monitoring requirements are tools to be used to complement the site inspections, which are already required, to help construction operators to assess whether they are achieving the goal of minimizing pollution.

### **Wholesale Seed to the Erosion Control and Restoration Industries**

*California Native Grasses,  
Wildflowers & Forbs*

Special Collections Available



**Distributors of:**

- Hydro-Blanket™ MBFM
- Regreen™ sterile hybrid wheatgrass
- BIOSOL® natural fertilizer
- AM-120 mycorrhizal inoculum
- Hydroseed Mulches & Binders

6144A Industrial Way Livermore, CA 94550  
(925) 373-4417 FAX (925) 373-6855  
e-mail: [pcseed@worldnet.att.net](mailto:pcseed@worldnet.att.net)



## ADVERTISING INFORMATION

Advertising in the Western Chapter IECA Newsletter is a great deal! Benefits include:

- ✓ Inclusion in both the on-line version and the standard paper version.
- ✓ Direct links to your website on the on-line version.
- ✓ Distribution to the people who need your products/services the most – erosion control professionals.
- ✓ Distribution at trade shows, seminars, conferences, short courses and field tours.
- ✓ And you will be helping to make the Western Chapter IECA Newsletter the best in the industry.

The Western Chapter IECA Newsletter is distributed quarterly to members of the Western Chapter IECA. Additionally, each year the January issue will be a Special Color Edition that will be distributed at the Annual IECA Conference.

If you have any questions or would like more information, please contact Vance Howard at:  
Phone: (530) 757-1156 Fax: (530) 247-1601  
E-mail: [vance@dcn.davis.ca.us](mailto:vance@dcn.davis.ca.us)

## CLASSIFIED ADS

The Friends of the San Francisco Estuary has several publications and videos addressing construction site erosion control available for purchase. Check out <http://http://www.swrcb.ca.gov> and click on the Storm Water Button, Training Opportunities for details or call (510) 622--2465.

In cooperation with the San Francisco Bay Regional Board the San Francisco Estuary Project offers one-day workshops on *Construction Site Planning and Management For Water Quality Protection*. Contact Carol Thornton at (510) 622-2419 or e-mail to [ct@rb2.swrcb.ca.gov](mailto:ct@rb2.swrcb.ca.gov) for the current training schedule.

This is a new section for Western Chapter News and it is FREE to Western Chapter Members. Classified ads are limited to 4-5 lines (approximately 25 words). Content of the ad must be industry related. Examples include: employment opportunities, used equipment to sell, etc. Submit your classified ad to Sandy Mathews.

Phone: (925) 423-6679

Fax: (925) 422-2748

E-mail: [mathews6@llnl.gov](mailto:mathews6@llnl.gov)

# Do You Have Stormwater and Groundwater Runoff Problems???

## PUMP IT • PIPE IT • FILTER IT • STORE IT

Stormwater and groundwater runoff can be a regulatory road block that can stop you from bringing your project in on time and within budget. These runoff problems can also get you a lot of coverage on the local news.

RAIN FOR RENT offers real solutions to these real everyday problems. We can design a complete filtration system to handle all of your runoff problems.

**It's a SOLUTION *exclusively from*  
RAIN FOR RENT!**

# 1-800-742-7246

3404 State Road • Bakersfield, CA 93308

[www.rainforrent.com](http://www.rainforrent.com)



SAND MEDIA FILTER



PARTICULATE FILTERS







**Western Chapter IECA**  
**c/o SWAG**  
**491 South St. Suite B**  
**Redding, CA 96001**

**Western Chapter International Erosion Control Association  
 Board of Directors**

Julie Etra	President	(775) 849-3223	(775) 849-3303 Fax	JulieEtra@aol.com
Carol Forrest	Admin. Vice President	(619) 683-6182	(619) 293-7920 Fax	carol_forrest@urscorp.com
Jon Shilling	Tech. Vice President	(916) 652-9530	(916) 652-9533 Fax	no e-mail
Claudia Zachreson	Treasurer	(775) 322-7755	(775) 322-6606 Fax	czachreson@aol.com
Sandy Mathews	Secretary	(925) 423-6679	(925) 422-2748 Fax	mathews6@llnl.gov
John Haynes	Board Member	(916) 653-8077	(916) 653-2124 Fax	john_haynes@dot.ca.gov
Kym Kelley	Board Member	(775) 322-7755	(775) 322-6606 Fax	kellejerosion@worldnet.att.net
Angelo Picorilla	Board Member	(775) 883-1211	(775) 883-3110 Fax	no e-mail
Mike Chase	Board Member	(661) 399-9128 x 111	(661) 399-0237 Fax	mchase@rainforrent.com

## Attention!

Many exciting things are happening in the Western Chapter. First, the Western Chapter IECA now has a website ([www.wcieca.org](http://www.wcieca.org)). This is where you can go to read the newsletter, view announcements, and stay in touch with what is happening in the Western Chapter. For advertisers this means exposure to EC professionals around the world and a direct link to your company's website.

It is time for you to get involved. This newsletter is for you and your fellow professionals. Share your knowledge of the industry with others—submit an article, a column, or just an announcement. There is a lot happening in the erosion control industry these days (new regulations, new technologies, etc.). Let's communicate and stay ahead of the game.

At the recent IECA Conference in Las Vegas many Western Chapter members informed me that they were not receiving the newsletter. Over 80% of the members receive the newsletter via email. Unlike physical addresses, email addresses change often, so keep me updated to insure you always receive the newsletter and announcements.

Vance Howard, Editor

*Western Chapter News is produced by the non-profit Sacramento Watersheds Action Group.*

**Editor: Vance Howard**

**Web Editor: Rose Sloan**

**Technical Review Committee:**

- **John Haynes, Chair**
- **Julie Etra**
- **Mike Chase**

Articles can be submitted electronically as a Word document (.doc) via e-mail, or by fax.

**E-mail: [vance@dcn.davis.ca.us](mailto:vance@dcn.davis.ca.us)**

**Fax: (530) 247-1601**

**To contact the Editor, Vance Howard:**

**E-mail: [vance@dcn.davis.ca.us](mailto:vance@dcn.davis.ca.us)**

**Phone: (530) 757-1156**