



International Erosion Control Association

Serving Erosion Control Professionals in Arizona, California, Nevada, and Hawaii

IN THIS ISSUE

President's Message	1
State of Erosion Control in Hawaii	2
2024 IECA Annual Conference	2
IECA Conference in Kansas City	3
Help Your Chapter	3
Upcoming Important Dates	4
BOD Candidates Wanted	4
Regional News	4-8
Products & Services	6-8
Professional Listings	9-10

PRESIDENT'S MESSAGE

Dear Western Chapter Members,

As erosion and sediment control professionals, we often provide our technical expertise prior to the wet seasons. In fact, we spend a lot of time engaging other professionals while implementing erosion control measures, hoping to minimize soil loss and sedimentation if and when rain arrives. But for this wet season, limiting erosion and sedimentation has been a tough task given the back-to-back atmospheric river events with massive snow and rainfall amounts.

This wet season has been a very active season for all of our member states of Arizona, California, Hawaii, and Nevada. A quick stroke of the keyboard on the internet provided an eye-opening surprise regarding the impact of these atmospheric events on drought conditions. Arizona began this wet season with 56% of the state in moderate drought and will end the season with approximately 32% being classified as abnormally dry. Arizona's wet season included severe thunderstorms, flash flooding, destructive winds, and landspout tornadoes. California began its wet season with 99% of the state in severe drought. It will likely end with 73% classified as abnormally dry and only 10% remaining in severe drought conditions. The drought monitor shows Hawaii's status at 0%. At the start of the wet season, Hawaii was classified as 97% abnormally dry. Finally, Nevada began the season with a classification of 100% moderate drought and will end its wet season in an 83% moderately dry situation.

While the atmospheric river storms have brought much-needed rain, I would like to take a moment to ask our members, "how are you managing runoff conditions from these events?" I encourage all members to consider providing a write-up to include in our Western Chapter newsletter, allowing us all to share your accomplishments.

Take care,
Melanie Sotelo – President



**Melanie Sotelo MSE,
CPESC, CPSWQ
WGIECA President
msotelo@cascinc.com
CASC Engineering &
Consulting**

STATE OF EROSION CONTROL IN HAWAII

As the Hawaii State Representative to the Western Chapter of the IECA, I wish to highlight erosion control in Hawaii. I helped formulate and became the President of the New England Chapter of the IECA. Being in Massachusetts where Oregon and Massachusetts once vied for the most environmentally conscious state, moving full-time to Hawaii in 2007 was an eye opener. It is literally a third world like state who thinks 1950s era concrete structure engineering is the only way to go, never heard of or recognize bioengineering.

Hawaii's slogan joke is: "The solution to pollution is dilution". In other words, if you have silt and sediments, nitrates and phosphates, oils and greases, etc. just throw it in the ocean. The ACOE is evaluating what to do about the flooding of the Ala Wai Canal which lies in the heart of the main commercial district of Waikiki. Their latest proposal, since the canal walls are so clogged up with silt, is just to raise the canal walls six feet and let the silt and sediment go into the harbor near by the way the major Yacht Club of all of Hawaii.

This has too long been the solution in Hawaii – armor shore banks and canals and pass the erosion problem down the line, or better yet, dump it into the ocean. Hawaii is a paradise, a beautiful state, but does have a mud-laden underside. Take a look at this article - [‘We need help’: North Shore home collapse has neighbors on edge \(hawaiinewsnow.com\)](https://www.hawaiinewsnow.com/story/news/2023/01/12/north-shore-home-collapse-has-neighbors-on-edge/6968447002/).

These are the fabled surfing beaches on the North Shore of Oahu – Pipeline, Sunset Beach, Chun's Reef and others with multimillion dollar homes – the City and County of Honolulu and the State of Hawaii's response to shoreline erosion – “either let them fall in the ocean or move them”.

I have been an erosion control professional for almost 50 years. I am an EPA Environmental Technology Innovative Award winner for erosion control, and again for stormwater mitigation. [Attached](#) is a solution I came up with for the North Shore of Oahu issue – which fell on deaf ears. We do have our preferred brands but as the IECA promotes, we do not pass the problem down the line, other manufacturers likely could come up with similar absorbent, not armoring solutions. As an IECA member, I wish other members could join in and help Hawaiian regulators realize there are modern solution, not WWII-era methods.

Mahalo,

Mark Howland



Mark Howland - Chief
Biologist
markahowland@hawaii.rr.com
WHALE Environmental
Services LLC

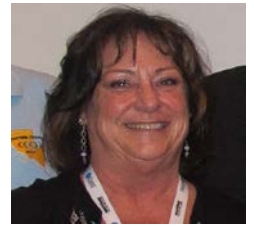


IECA CONFERENCE IN KANSAS CITY

I can't believe how lucky we were to attend this conference. With all the bad weather going on, IECA was able to clear the weather pattern for a week of gorgeous sunny weather in Kansas City.

Western Chapter was well represented with 25 attendees from our chapter. We were able to have the Chapter Meeting via Zoom so that those who couldn't be in Kansas City could attend the meeting. Thanks to all who attended via Zoom or in person.

Western Chapter sponsored a student from San Diego State. In addition, we met several international students who attended on sponsorship as well. Seeing all the students engaged was really motivational. There are some smart and talented students out there in our field and they showcased their poster submissions.



Jeannie Duarte QSD, QSP, ToR, CPSWQ, CPESC, CISEC WCIECA Admin. VP & Treasurer
jduarte@swres.org
Storm Water Resources, Inc.

The chapter is also looking for chapter members who are interested in getting involved. We have committees forming to take on the tasks that were identified in our strategic planning process we completed last year. *Please take a moment and consider joining one of the committees. We need help to make Western Chapter great and we could use your assistance. So, if you have marketing talents, can help plan events, or are interested in working on increasing membership, let us know!!! We need you!*

*Many hands make
light work
the WCIECA Board
needs **YOU!***



**Help your chapter!
Click here to volunteer.**

UPCOMING IMPORTANT DATES

03/29/2023 - [Celebrating Women in ERSED 2023](#) Live Web Event at 3:00 PM (PT).
FREE to members.

06/02/2023 – [Deadline for Abstract Submission](#). Submit and abstract to speak at the [IECA Annual Conference and Expo](#) in Spokane, Washington 25-28 February, 2024 to get recognized as an industry thought leader.

02/25-28/2024 – [IECA Annual Conference and Expo](#) in Spokane, Washington.

BOD CANDIDATES NEEDED!

Will you run? Do you know a member who would be perfect?

Please consider either nominating a qualified person or running for a director position yourself! Each summer, three of nine Western Chapter Board full-term Director positions (three-year term) are up for election. This is one of the most fulfilling ways to increase your involvement in and broaden your impact on our industry.

Qualifications: Must be a Western Chapter member (for at least one year).

Key responsibilities for the Directors include managing and administering the Chapter as a not-for-profit corporation, creating educational opportunities for the Chapter members, helping the Chapter and IECA grow, and responding to member questions and concerns. The time commitment includes quarterly meetings and subcommittee work totaling ~ 5-10 hrs. per quarter.

Send your nomination OR submit a self-nomination with a photo and a candidate statement (a 200-word, electronically formatted, description of your work/background and an explanation as to why you want to serve on the Western Chapter Board of Directors) by June 6 to Cyndi Brinkhurst the Administrative Assistant at westernchapter@gmail.com.

REGIONAL NEWS FROM IECA

TOP NEWS


[Calif. report maps flood risk from groundwater in Bay Area](#)

Ocean water advancing inland due to higher tides could push less-dense groundwater upward and pose a flooding risk in the San Francisco Bay Area, according to a new report. The research behind the report was carried out by the Pathways Climate Institute, the San Francisco Estuary Institute, the University of California at Berkeley and others and maps vulnerable areas in Alameda, Marin, San Francisco and San Mateo counties.

Full Story: [Los Angeles Times \(tiered subscription model\)](#) (1/17)

MS4 MANAGEMENT

[Marines' Hawaii base to address stormwater violations](#)

The Marine Corps has agreed to address stormwater deficiencies at its base in Kaneohe, Hawaii. The US Environmental Protection Agency found in 2020 that the base "exceeded discharge limits and failed to submit all discharge monitoring data" required under a national permit.  **Full Story:** [KHNL-TV/KGMB-TV \(Honolulu\)](#) (8/11)

REGIONAL NEWS FROM IECA

POLICY AND REGULATION

[Repair package agreed for Pajaro Valley levees](#)

Federal and state officials have agreed on a \$400 million funding package for renovations to the dilapidated Pajaro River levee system protecting Watsonville and Pajaro Valley in California. Flood waters have breached the 70-year-old levee system on several occasions, most notably in 1995. **Full Story:** [Santa Cruz Sentinel \(CA\)](#) (10/20)

[EPA urged to expand drinking water substance monitoring](#)

The Environmental Protection Agency's 2021 draft list for substances to potentially regulate under the Safe Drinking Water Act includes PFAS, but it should be expanded to feature more bisphenols and other chemicals, the EPA's Science Advisory Board says. The SAB would also like to see microplastics, nanoparticles and antimicrobial-resistance genes on the list eventually. **Full Story:** [Chemical & Engineering News \(tiered subscription model\)](#) (8/25)

[CA debuts new strategy for looming water shortage](#)

California Gov. Gavin Newsom on Thursday outlined a plan leveraging water recycling and reuse, desalination, and other technologies to help the state shore up its water supplies, which could decline 10% by 2040. "We will be working hand in hand with the governor's office and water agencies across the state, the Southwest and Metropolitan's service area to develop new supplies and infrastructure that will provide resilience to protect our health, economy and environment with no one left behind," said Adel Hagekhalil of the Metropolitan Water District. **Full Story:** [The Hill](#) (8/11), [Reuters](#) (8/12), [E&E News](#) (8/11)

[Hawaii fund would facilitate retreat from rising seas](#)

Legislation being considered in Maui County, Hawaii, would establish a revolving fund that would help reduce the negative effects of shoreline erosion and sea-level rise in West Maui, where a road and utility lanes are nearly under water and nine condominium complexes may fall into the ocean. The bill would add a chapter into county code that would help residents who must abandon property that ends up underwater as well as offer aid when public infrastructure is endangered by rising seas. **Full Story:** [Maui Now \(Hawaii\)](#) (8/5)

[House bill would fund US estuary program](#)

Rep. Mike Levin, D-CA, is joined by fellow lawmakers from California, Florida, and Oregon in backing a House bill to reauthorize \$60 million in annual funding for the Coastal and Estuarine Land Conservation Program. The funds would serve to protect estuary habitats, including efforts to restore ecological function, preserve migration patterns and protect coastal communities. **Full Story:** [San Clemente Times \(Capistrano Beach, CA\)](#) (6/21)

EROSION/SEDIMENT CONTROL

[US to help restore CA's Salton Sea](#)

California's shrinking Salton Sea will benefit from \$250 million in federal spending over four years for cleanup and restoration. The lake has long depended on agricultural runoff but has been losing water in recent dry years, leaving behind toxic dust. **Full Story:** [The Associated Press](#) (11/28)

[Hawaii group seeks ways to adjust to rapid erosion](#)

Hawaii's North Shore Coastal Resilience Working Group makes six recommendations to better manage the desperate situation of homeowners facing accelerating beach erosion. Members cite a currently chaotic situation as they call for clearer guidelines on what owners may and may not do to protect their properties. **Full Story:** [Honolulu Civil Beat](#) (10/31)

[CA winemaker protests order to replant burned trees](#)

A winemaker in California's Napa County is planting an experimental low-disturbance vineyard in the place of trees burned in the 2020 Glass Fire. However, Jayson Woodbridge says county officials have ordered him to stop and instead replace the trees, which he says are a fire hazard. **Full Story:** [The Missoula Current \(Mont.\)/Courthouse News](#) (10/12)

REGIONAL NEWS FROM IECA

EROSION/SEDIMENT CONTROL CONTINUED

[Work begins to stabilize CA coastal railroad tracks](#)

Emergency work is underway to address slippage observed in about 700 feet of coastal railroad tracks north of Camp Pendleton in California. The \$6 million construction project is expected to take 30 to 45 days to restore the only rail line linking San Diego to the rest of the country. **Full Story:** [Los Angeles Times \(tiered subscription model\)](#) (10/5)

[Homeowners' makeshift sea walls seen as danger in Hawaii](#)

Sand tubes and black fabric have been applied haphazardly by coastal homeowners along Oahu's North Shore in Hawaii as they resort to any means to keep their properties from being washed into the sea, but officials say such measures imperil public beaches. "Allowing these structures to remain endangers the public beach, limits access to them for much of the year, and is littering the near-shore marine and shoreline environment with debris," says Michael Cain, administrator of the Department of Land and Natural Resources' Office of Conservation and Coastal Lands. **Full Story:** [SFGate \(San Francisco\)](#) (9/25)

[Studies: Pollutants soar in waterways after wildfires](#)

Waters in areas struck by wildfires suffer significant pollution that can linger, according to a recent report published in the American Geophysical Union's Water Resources Research journal. The report pulls together studies from 184 scientific papers since 1980, noting a post-fire increase in streamflows and sediments that include toxic and organic metals and nutrients in concentrations up to 100 times those preceding the fires. **Full Story:** [ScienceDaily](#) (9/15)

[Sediment removal to begin at L.A. County reservoir](#)

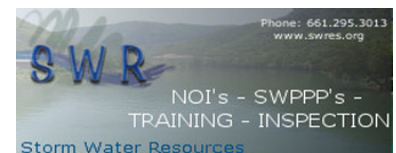
The Los Angeles County, CA, Public Works Department on Thursday will start annual maintenance, including sediment removal, at the Devil's Gate Reservoir behind the dam of the same name. The work is expected to last three months and will remove 45,000 cubic yards of sediment to help ease flooding along the Arroyo Seco. **Full Story:** [Pasadena Now \(CA\)](#) (8/30)

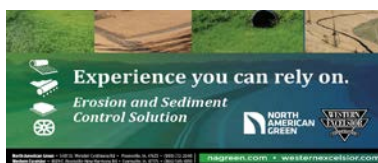
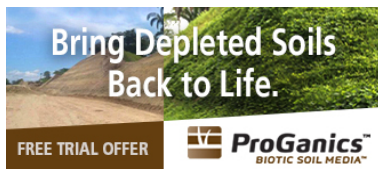
[CA project to keep road sediment from reaching creek](#)

A project to prevent road and trail sediment from entering Big Chico Creek in Bidwell Park in Chico, CA, will begin Monday. The Upper Park Road Sediment Reduction Project will use new culverts and rolling dips to better channel stormwater. **Full Story:** [Chico Enterprise-Record \(CA\)](#) (8/2)

[Satellite images to help study CA coastline erosion](#)

Satellite imagery funded by NASA will give planners and environmental engineers a clearer picture of severe coastline erosion in Southern California's Orange County. Engineering researchers at the University of California at Irvine and University of Houston are teaming up to better gauge flood risk and understand where sand is disappearing and accumulating at dunes and beaches. **Full Story:** [The Orange County Register \(Anaheim, CA\) \(tiered subscription model\)](#) (7/15)





REGIONAL NEWS FROM IECA

EROSION/SEDIMENT CONTROL

[Las Vegas being protected from post-wildfire flooding](#)

The effects of the Calf Canyon/Hermits Peak Fire in New Mexico on water supplies and land may be felt for decades to come, but efforts are underway to minimize the damage. The US Forest Service is warning of an extreme flood risk near Las Vegas posed by almost 30,000 burned acres in the Gallinas and Tecolote Creek watersheds, and flood barriers for the city are now being installed. **Full Story:** [Albuquerque Journal \(N.M.\) \(tiered subscription model\)](#) (7/8)

[Erosion threatens road in AZ city](#)

Hohokam Drive in Nogales, AZ, is increasingly threatened by spreading erosion at Nogales Wash, but City Engineer Juan Guerra says no action can be taken until the Arizona Department of Environmental Quality and the US Army Corps of Engineers grant their approvals. Minus those clearances, the only way the city would act would be in the event of an extreme weather event posing an immediate danger to the road, Guerra says. **Full Story:** [Nogales International \(AZ\)](#) (6/23)

[Waikiki coast presents difficulties for mitigating erosion](#)

Several small beaches make up the coastline of Waikiki, Hawaii, which creates a complex situation for addressing sand erosion, according to Dolan Eversole of the University of Hawaii Sea Grant Program. "Each beach is a little different because of all the structures that are built that go out into the water," Eversole says. **Full Story:** [Hawaii Public Radio](#) (6/2)

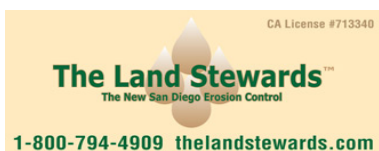
STORMWATER MANAGEMENT

[L.A. County touts success of winter stormwater capture](#)

Los Angeles County has captured enough water from a series of winter storms to serve 816,000 people for a year, says Mark Pestrella, the county's public works director. The more than 33 billion gallons of stormwater "is great news for the county and the region," Pestrella said. **Full Story:** [Los Angeles Daily News/City News Service](#) (1/17)

[Calif. levees struggle to survive atmospheric river rain](#)

California has experienced a series of atmospheric river-fed storms that are overflowing waterways and overwhelming levees in parts of the state, and more heavy rain is in the forecast for at least another week. "This is an extreme weather event, and we're moving from extreme drought to extreme flood," California Department of Water Resources Director Karla Nemeth said. **Full Story:** [E&E News](#) (1/5)



REGIONAL NEWS FROM IECA

WETLANDS & COASTAL RESTORATION

[Hawaii residents weigh options to restore Honokowai Beach](#)

The public was invited to a meeting Tuesday to consider various methods for restoring and preserving Hawaii's Honokowai Beach. Attendees were presented three options: beach nourishment, beach maintenance, or beach nourishment with stabilizing structures, with additional objectives including shoreline access and long-term adaptation to rising seas. **Full Story:** [Lahaina News \(Hawaii\)](#) (1/13)

[Nature reshaping, threatening Calif. beaches](#)

Beaches are an integral and beloved part of life in California, but they're increasingly endangered and being reshaped by rising seas and erosion. As a result, high-value infrastructure, homes, and recreation are being threatened while solutions are few and far between. **Full Story:** [Los Angeles Daily News](#) (12/12)

[CA living shoreline project advances](#)

The California Coastal Commission has cleared a pilot plan to create a "living shoreline" extending from Capistrano Beach to Dana Point's southern Doheny State Beach. Cobblestone would be spread along the shore to be topped by sand and then vegetation in a bid to prevent destructive erosion, but funding must be raised to cover the cost, which could be as high as \$14 million. **Full Story:** [The Orange County Register \(Anaheim, CA\)](#) (tiered subscription model) (11/17)

[National Park Service restoring CA's Marin Headlands](#)

Runoff from abandoned Army infrastructure is eroding parts of California's Marin Headlands and the National Park Service is working to address the problem with a one-acre wetland restoration project. NPS is directing \$50,000 toward the \$75,000 project and the remaining funds will come from the National Park Foundation. **Full Story:** [Marin Independent Journal \(San Rafael, CA\)](#) (11/5)

[CA advances repair of failed slope in La Jolla](#)

The California Coastal Commission voted last week to repair and return vegetation to a slope in La Jolla that failed due to a water line break four years ago. Work is expected to begin early next year and take about six months over an area of about 100 feet long by 75 feet wide. **Full Story:** [La Jolla Light \(CA\)](#) (9/12)

[San Diego climate plan includes 700 acres of marshland](#)

San Diego's new climate action plan calls for 700 new acres of marshland. The marshes will serve as a carbon sink and a means to absorb water from rising sea levels. **Full Story:** [The San Diego Union-Tribune](#) (tiered subscription model) (8/23)



PROFESSIONAL LISTINGS

Dirttime.tv is an affiliated brand of [Salix Applied Earthcare LLC](#), formed in 1996 by John McCullah. John has been involved in Watershed Management for 30 years, becoming a certified erosion specialist in 1986. The firm's work involves consulting, training, design/build of stream restoration, bioengineering, education, and awareness. Salix has published design guidance manuals, books, popular and technical articles, and informative case studies. Dirttime.tv has produced over 40 Dirt Time videos. Selecting and watching the clips of your choice then taking tests online is a popular way to earn CEUs. Visit www.dirttime.tv regularly for 'how to' info, tips, and blogs.

Earthsavers Erosion Control Products is the home of the "Original Rice Straw Wattle." Our certified weed-free wattles have been tested for sediment retention at San Diego State University and proven in field studies by Caltrans and numerous other agencies. Earthsavers wattles are available in 3 diameters, photodegradable netting, or 100% biodegradable burlap. Additionally, [Earthsavers](#) is a master distributor for a full line of erosion & sediment control products, geosynthetics and more. Our network of distributors provides local access to premium BMPs and Earthsaver's experienced staff can provide superior technical support to our distributors and their customers and specifiers.

Kelley Erosion Control, Inc. was established in 1983 is recognized throughout Nevada and California as a leader in the industry. The company has an excellent reputation known for quality, competency, solutions, innovative ideas, cutting edge technology, excellence, and client satisfaction. Services include: hydroseeding, site preparation, dust control applications, BMP's, revegetation and project maintenance, site winterization, wetland mitigation, stream channel stabilization, planting and irrigation, mining reclamation, soil stabilizer applications, biotechnical applications, and fire restoration/rehabilitation. Phone (775) 322-7755; Fax (775) 322-6606. Contact – Claudia Chambers CPESC, CISEC, QSP Claudia@kelleyerosioncontrol.com. Visit us at www.kelleyerosioncontrol.com.

LSC Environmental Products exists to solve some of the industry's most persistent environmental challenges, such as erosion, revegetation, odor, dust, and waste cover, through the application of our spray-applied coatings. You probably know LSC as the "ADC guys," but we are more than that with the acquisition of Terra Novo, Inc., (best known for their EarthGuard® products); and have served the erosion and sediment control industry for almost 20 years. We are excited to offer new solutions, including soil amendment, site winterization, intermediate cover, and special waste that we believe can benefit virtually any site.

Nedia Enterprises manufactures a complete line of erosion control, sediment control, and bioengineering products that are made primarily from natural fibers. Committed to the conservation of the environment, we are constantly striving to develop products that contribute to its enhancement and protection. Our products are subject to stringent quality control measures that meet, or exceed, industry standards. [Nedia](#) offers sound technical advice on product selection and installation, with a thorough understanding of the benefits and limitations of the products. A large inventory of products in several distribution centers across the country facilitates cost-effective and timely delivery of our products. Contact 888-725-6999 or email info@nedia.com.

Rocky Mountain Bio Products supplies organic bio-fertilizers, natural soil conditioners, and soil amendments. Biosol Forte is an organic fungal and bacterial biomass from penicillin production, with unique, stable, and long-lasting nutrients for rebuilding all types of soil for revegetation. Menefee Humate is a natural soil conditioner for plant cell and root development. MycoApply mycorrhizae fungus is the amendment that aids in expanding the plant's root mass 100 to 1000 times larger, which helps plants be healthier and handle environmental stress. Our PermaMatrix is a Biotic Soil Amendment, is a topsoil replacement/alternative. Visit: www.WEFIXDIRT.com for product and distributor information.

NV5 is a multi-disciplinary engineering company that is a one stop for most of your development and engineering needs. Engineering and Professional Services include (but not limited to): Civil, Environmental, Construction, Mechanical, Survey, Building Inspection, Geophysical, and Geospatial Surveys. With offices in Arizona, Nevada, California, and throughout the country, we are here to serve all your environmental and engineering needs. In the Erosion and Sediment Control Industry we focus on SWPPP compliance services (CA QSDs and QSPs, owner representation, inspection services, LID/WQMP engineering designs, etc.). Contact the Long Beach, California office for more specific details. (562) 495-5777 Matthew.Renaud@nv5.com.

PROFESSIONAL LISTINGS CONTINUED

Pacific Coast Seed is Northern California's premier supplier of grasses and wildflowers native to California, turf grass seed, and other erosion control materials such as fertilizers, mulches, and soil amendments. We provide seed and other materials for diverse applications including restoration, reclamation, revegetation, ornamental landscaping, and erosion control. We offer specialty seed collection from site-specific sources. For more information check out our website www.pcseed.com or contact us at (925) 373-4417, or info@pcseed.com.

Reno Tahoe Geo Associates, Inc. – (Formerly Marvin E. Davis & Associates) focuses on the challenging issues of the Tahoe Basin and Northern Nevada/California terrain. Our professionals provide a diverse and solid background in geotechnical engineering, specialized engineering design, erosion control services, construction and forensic inspection services, materials testing, and regulatory/compliance issues to enable project approval. Phone (775) 853-9100 or visit us at <http://www.rtgeo.com/>.

Sustane Natural Fertilizer — For over 30 years of continuous operation, [Sustane Natural Fertilizer, Inc.](http://www.sustane.com) has produced the highest quality natural organic fertilizers and soil amendments distributed in the U.S. and exported to 50 countries worldwide. Sustane Natural Fertilizer maintains and operates its U.S.E.P.A. permitted compost site, manufacturing facility, and corporate offices from Cannon Falls, Minnesota. Sustane fertilizers and soil amendments provide readily available, balanced nutrition with beneficial microbiology to provide the basic soil components for exceptional plant establishment and long-term sustainability. Call 800-352-9245 to speak with a Sustane Regional Specialist, or with our International Team Leader.

Western Green (and its associated erosion control brands North American Green and Western Excelsior) is the industry leader for manufactured erosion and sediment control products, and holds the industry's most complete product line, ranging from short term ECBs to permanent HPTRM Anchored Systems. Whether your site needs short-term protection or permanent vegetation reinforcement, trust Western Green's quality brand products to handle any erosion issue you may face.

SunWest Golf and Reclamation, Inc. is an Arizona-based hydroseeding and revegetation services company formed in 1997. The owner, Roby Everhart, has over 35 years' experience throughout the Southwest. SunWest has revegetated thousands of acres and we specialize in hydrostolonizing of golf courses and athletic fields. We have been involved in the grassing of over 300 golf courses in Arizona. SunWest is an owner operated corporation. The owner is involved in all day-to-day operations, to assure positive working results at every project. Roby Everhart and his crew are some of the most experienced people in the industry. His work force has a full understanding of the company's goals and commitments.

HEADS UP! [2024 IECA Annual Conference and Expo](https://www.ieca.org/) February 25-28, Spokane, WA



IECA
Annual Conference
and Expo

February 25-28, 2024
Spokane, WA

✿ *Have yourself the best spring ever!* ✿

